

### Aquatic Resources



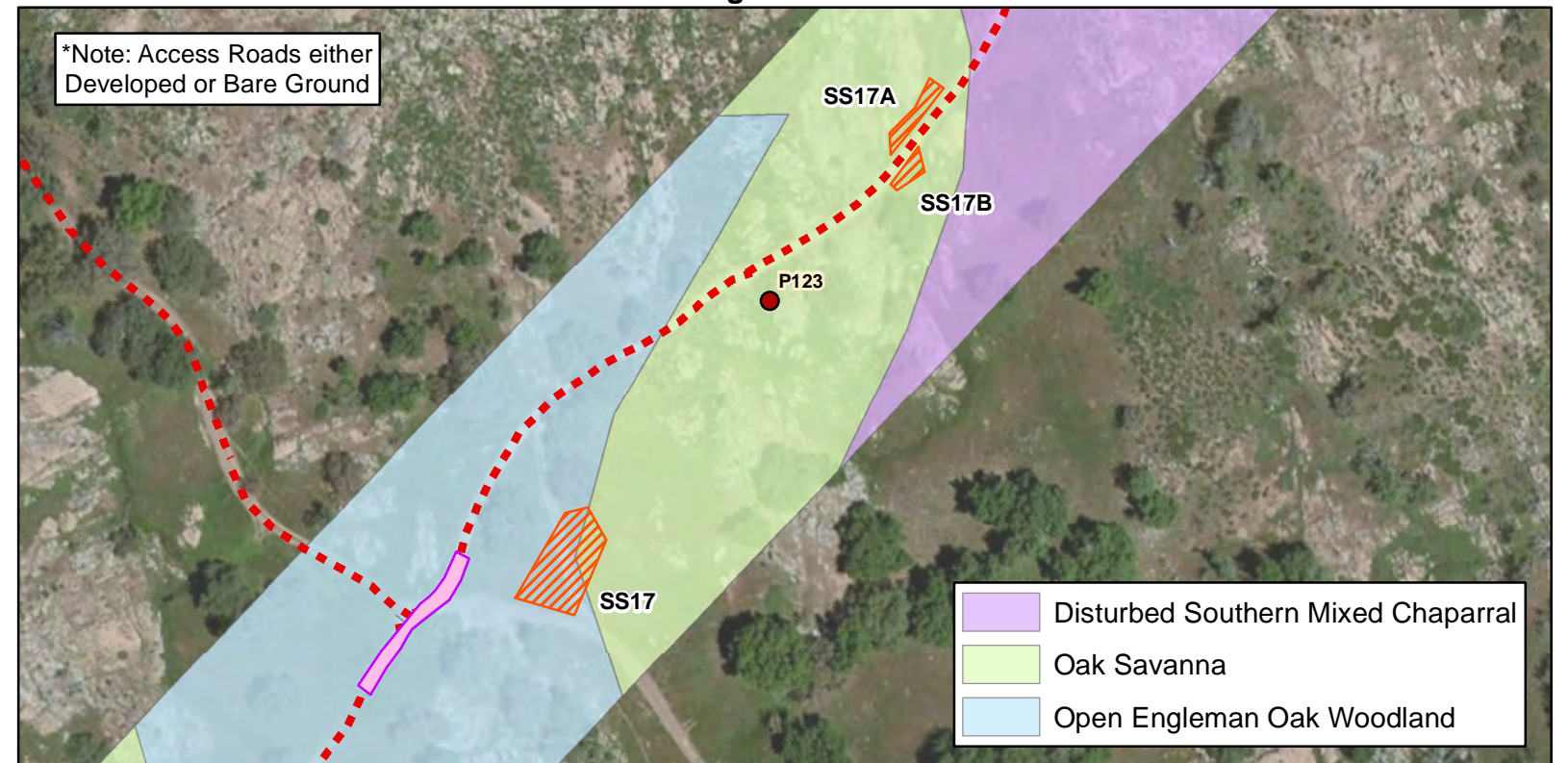
### Cultural Resources



### Sensitive Species



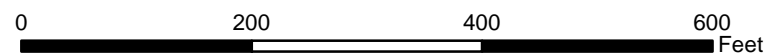
### General Vegetation



Minor Project Refinement Request No. 14 (Stringing Site 17 and 17A and 17B)

#### Attachment A: Resources Maps

Tie-Line 637 Wood-To-Steel Project



- Proposed Pole (Red dot)
- Existing Access Road (Red dashed line)
- New Proposed Stringing Sites 17, 17A, 17B (Orange hatched area)
- Original Stringing Site 17 (Pink area)

Service Layer Credits: Source: Esri, DigitalGlobe, GeoEye, i-cubed, Earthstar Geographics, CNES/Airbus DS, USDA, USGS, AEX, Getmapping, Aerogrid, IGN, IGP,